

FLOTECS
Fluid/Flue solutions®

**BALL FLOAT
TYPE STEAM
TRAP**

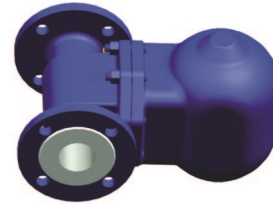
BALL FLOAT TYPE STEAM TRAP



FT14



FT44

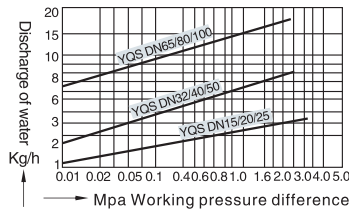
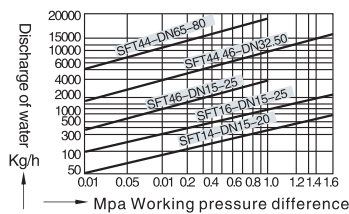


YQS43 (BR)

PRODUCT INTRODUCTION

Used in petroleum, metallurgy, chemical industry, paper, foods and steam equipment, driers and large heat exchangers. Projects with large amounts of condensed water are discharged.

Displacement diagram



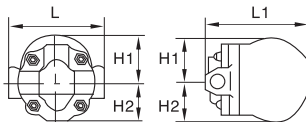
ADVANTAGES

Work efficiently on both light and heavy condensate loads. Compact in size. Discharge capacity is high and continuous, ensuring maximum heat transfer. Ball float steam traps are the best choice for draining plant with automatic temperature control. Stainless steel perfect anti-corrosion.

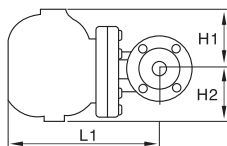
MAIN PART MATERIALS

Parts name	Materials
Body, bonnet	HT200、WCB
Float ball	Stainless Steel
Seat	Stainless Steel
Internal filters	Stainless Steel
Thermal element	Kazak alloy
Gasket	The stainless steel metaltwines the pad

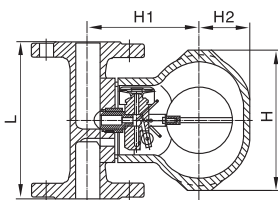
MAIN CONNECTION SIZES



SFT14, 16



43
SFT44
46



YQS43

Model	Nominal diameter DN	Connection	Pressure range Mpa	Max allowable Temp(°C)	External dimensions(mm)				
					L	L1	H1	H2	W
SFT14-16C	15~20	Thread	0.01~1.6	350	121	150	55	55	107
	25				130	157	55	55	107
	15~20	Flange			170	150	55	55	107
	25				190	157	55	55	107
SFT16-16C SFT44-16C (SFT43) (SFT46)	15~20	Thread	0.01~1.6	350	190	220	120	80	140
	15~20				150	225	85	115	110
	25	Flange			230	355	175	110	186
	32~50 65~100				350	478	253	155	267
YQS13H (BR634)	15	Thread	0.01~2.5	350	95	114	52	143	
	20				95	114	52	143	
	25				95	114	52	143	
YQS43H (BR634)	15	Flange	0.01~2.5	350	160	114	52	143	
	20				160	114	52	143	
	25				160	114	52	143	
YQS43H (BR634)	32	Flange	0.01~2.5	350	230	182	82	235	
	40				230	185	82	235	
	50				230	190	82	235	
YQS43H (BR634)	65	Flange	0.01~2.5	350	290	250	100	270	
	80				310	260	100	270	
					310	270	100	270	

BALL FLOAT TYPE STEAM TRAP

FLOTECS
Fluid/Flue solutions[®]

www.flotecs.co.uk / sales@flotecs.co.uk

