

FLOTECS
Fluid/Flue solutions[®]

FLOTECS
Syphons And
Connecting
Pipes

Syphons and connecting pipes For pressure measuring instruments

Applications

- Cooling element for protection from excessive heating of liquids, gases and vapours
- Protection from pressure spikes and pulsations
- Direct process connection of pressure measuring instruments or in combination with other instrumentation accessories (e.g. valves)

Special features

- Compact version suitable for vibration applications
- Customer-specific combination of valves and measuring instruments (instrument hook-up) on request
- Permissible temperatures to 550 °C [1,022 °F]
- Nominal pressures to 420 bar [6,091 psi]



Syphons, model 910.15, stainless steel
Fig. left: compact form
Fig. centre: U-form, DIN 16282 form A
Fig. right: trumpet form, DIN 16282 form C

Description

The geometries of the syphons in accordance with DIN 16282 are divided into U-form, trumpet form and compact form. These syphon versions are available with threaded connection (forms A and C) or weld-in connection (forms B and D) to the process side.

In addition to the standardised syphons, connections for NPT threads following DIN 16282 and industrial standard variants are available.

Inside the syphon, condensate is collected, which prevents the ingress of hot media into the pressure measuring instrument. It is recommended to fill the syphon with a cooling barrier liquid before commissioning the pressure line.

U-form syphons are intended for horizontal pressure tapping; trumpet-form syphons are intended for vertical pressure tapping.

The length-optimised compact form minimises the influence of vibrations and protects the pressure measuring instrument from pressure spikes and pulsations.

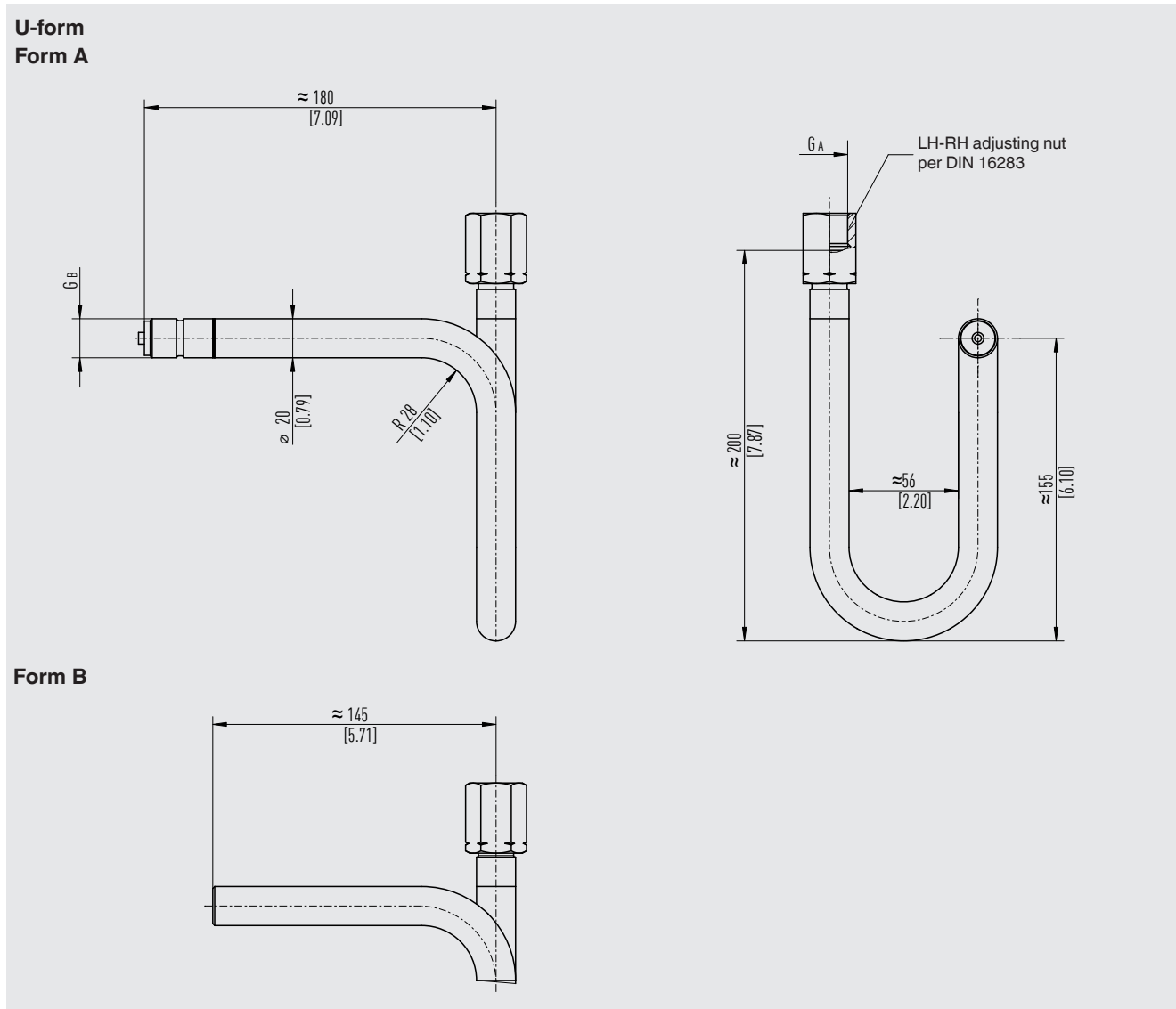
For applications that do not require a syphon, WIKA offers connecting pipes in a straight or angular (pipe elbow 90°) form.

Individual customer versions

Based on many years of experience in manufacturing and development, WIKA is happy to offer support in the construction and production of customer-specific solutions.

Designs per DIN 16282

Dimensions in mm [in]

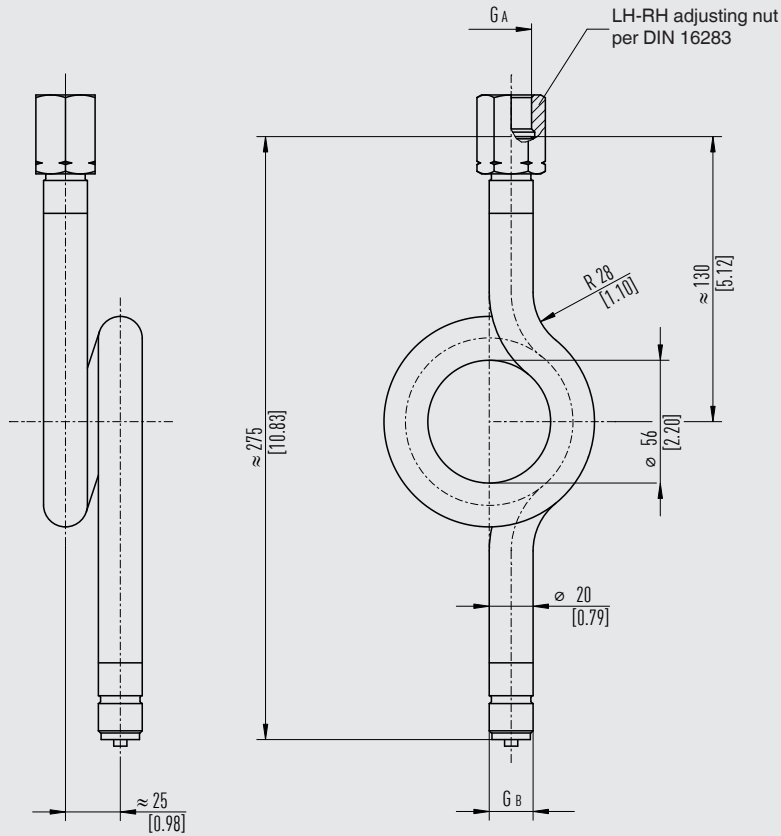


Due to the manufacturing process, the pipe dimensions at the bending points are slightly changed.

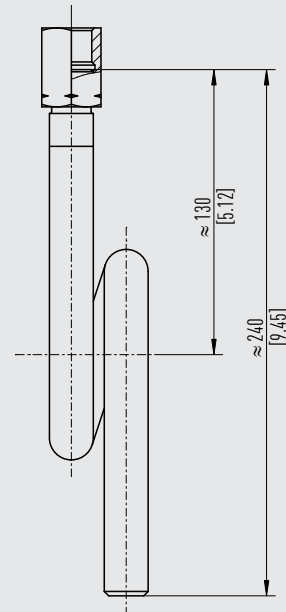
Version	G _A Instrument connection	G _B Process connection	Max. operating pressure in bar [psi]	Order number			
				Carbon steel, phosphated		Stainless steel 316L	
				Standard	With 3.1 ¹⁾	Standard	With 3.1 ¹⁾
Form A	G ½, LH-RH adjusting nut	G ½ B	160 [2,320]	9091181	2141736	9091220	2057841
Form A	M20 x 1.5, LH- RH adjusting nut	M20 x 1.5	160 [2,320]	On request	On request	On request	14160861
Form B	G ½, LH-RH adjusting nut	Weld-in, 2 x 45°	160 [2,320]	9091190	2057876	1323270	2194023

1) Including 3.1 inspection certificate per EN 10204, material proof for wetted metal parts

Trumpet form Form C



Form D



Due to the manufacturing process, the pipe dimensions at the bending points are slightly changed.

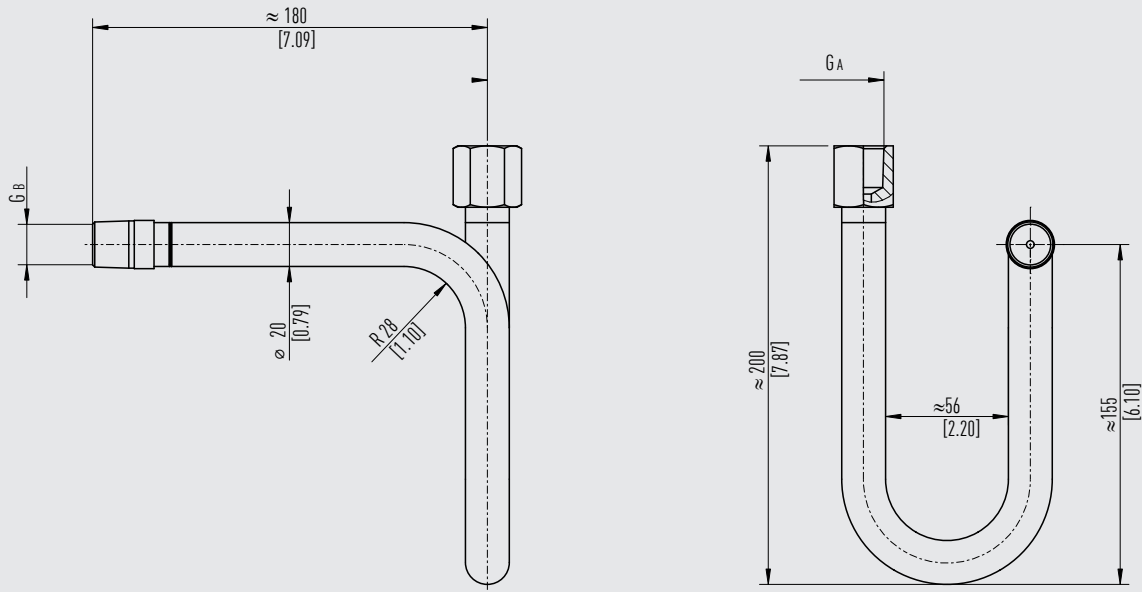
Version	G _A Instrument connection	G _B Process connection	Max. operating pressure in bar [psi]	Order number			
				Carbon steel, phosphated		Stainless steel 316L	
				Standard	With 3.1 ¹⁾	Standard	With 3.1 ¹⁾
Form C	G ½, LH-RH adjusting nut	G ½ B	160 [2,320]	9091203	2329039	9091238	1323997
Form C	M20 x 1.5, LH-RH adjusting nut	M20 x 1.5	160 [2,320]	On request	14182633	On request	14137620
Form D	G ½, LH-RH adjusting nut	Weld-in, 2 x 45°	160 [2,320]	9091211	1614940	1440497	1614924

Designs following DIN 16282

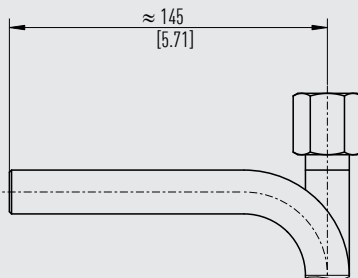
Connection thread ½ NPT

Dimensions in mm [in]

U-form Form A



Form B



Due to the manufacturing process, the pipe dimensions at the bending points are slightly changed.

Version	G _A Instrument connection	G _B Process connection	Max. operating pressure in bar [psi]	Order number			
				Carbon steel, phosphated		Stainless steel 316L	
				Standard	With 3.1 ¹⁾	Standard	With 3.1 ¹⁾
Form A	½ NPT, connection sleeve	½ NPT, male	160 [2,320]	On request	On request	0731277	11037431
Form B	½ NPT, connection sleeve	Weld-in, 2 x 45°	160 [2,320]	14107087	On request	On request	14115561

1) Including 3.1 inspection certificate per EN 10204, material proof for wetted metal parts

FLOTECS

Syphons And Connecting Pipes

FLOTECS
Fluid/Flue solutions[®]

www.flotecs.co.uk / sales@flotecs.co.uk

